

NORTH SPOOKY LANE ROADWAY IMPROVEMENTS

FOR WALTON COUNTY PUBLIC WORKS

WALTON COUNTY, FL
100% CONSTRUCTION PLANS
May 9, 2022



| Sheet List Table | |
|------------------|------------------------|
| Sheet Number | Sheet Title |
| C000 | COVER SHEET |
| C100 | GENERAL NOTES |
| C200 | TYPICAL SECTION |
| C300 | EXISTING CONDITIONS |
| C400 | PLAN & PROFILE |
| C500-C502 | ROADWAY CROSS SECTIONS |

Christopher D. Hartman,
Professional Engineer, State
of Florida, License No. 92366
This item has been digitally
signed and sealed by
Christopher D. Hartman, PE,
on 05/16/2022.
Printed copies of this
document are not considered
signed and sealed and the
signature must be verified on
any electronic copies.

GOVERNING DESIGN STANDARDS:
Florida Department of Transportation, FY 2022-22 Standard Plans for Road and
Bridge Construction and applicable Interim Revisions (IRs).

Standard Plans for Road Construction and associated IRs are available at the
following website: <http://www.fdot.gov/design/standardplans>

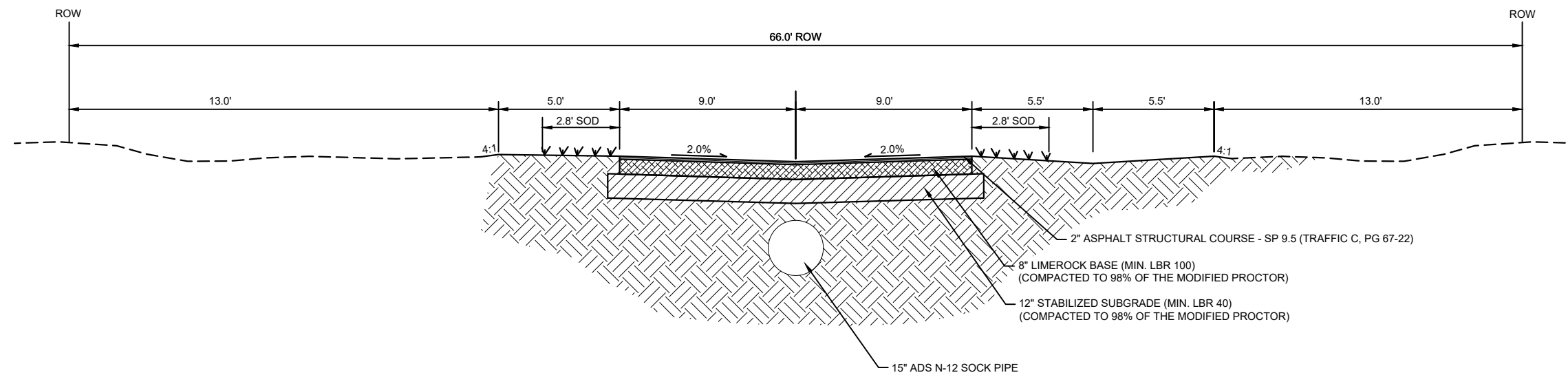
GOVERNING STANDARD SPECIFICATIONS:
Florida Department of Transportation, July 2022 Standard Specifications
for Road and Bridge Construction at the following website:
www.fdot.gov/programmanagement/Implemented/SpecBooks

| KEY SHEET REVISIONS | |
|---------------------|-------------|
| DATE | DESCRIPTION |
| | |

PLAN PREPARED BY:

CHRISTOPHER D. HARTMAN, P.E.
P.E. NO.: 92366
KIMLEY-HORN AND ASSOCIATES, INC.
2619 CENTENNIAL BLVD. SUITE 200
TALLAHASSEE, FL 32308
CERTIFICATE OF AUTHORIZATION NO.: 696

Plotted By: King, Michael Sheet Set: 042113003 SPOOKY LN. Layout: C200 May 16, 2022 01:05:44pm K:\TAL_Civil\042113003-N Spooky Ln Rdwy Improvements\Design\CADD\PlanSheets\C200 TYP SECTION.dwg



TYPICAL SECTION (SPOOKY LN.)

N.T.S.

| REVISIONS | |
|-----------|-------------|
| DATE | DESCRIPTION |
| | |



KIMLEY-HORN AND ASSOCIATES, INC.
 Certificate Of Authorization No. 696
 CHRISTOPHER D. HARTMAN, P.E.
 P.E. LICENSE No. 92366
 2619 CENTENNIAL BOULEVARD, SUITE 200
 TALLAHASSEE, FLORIDA 32308

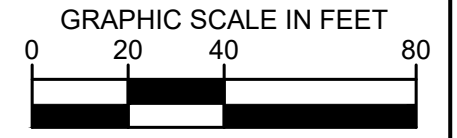
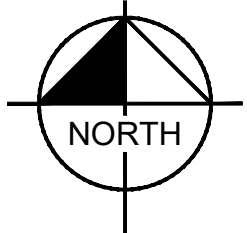
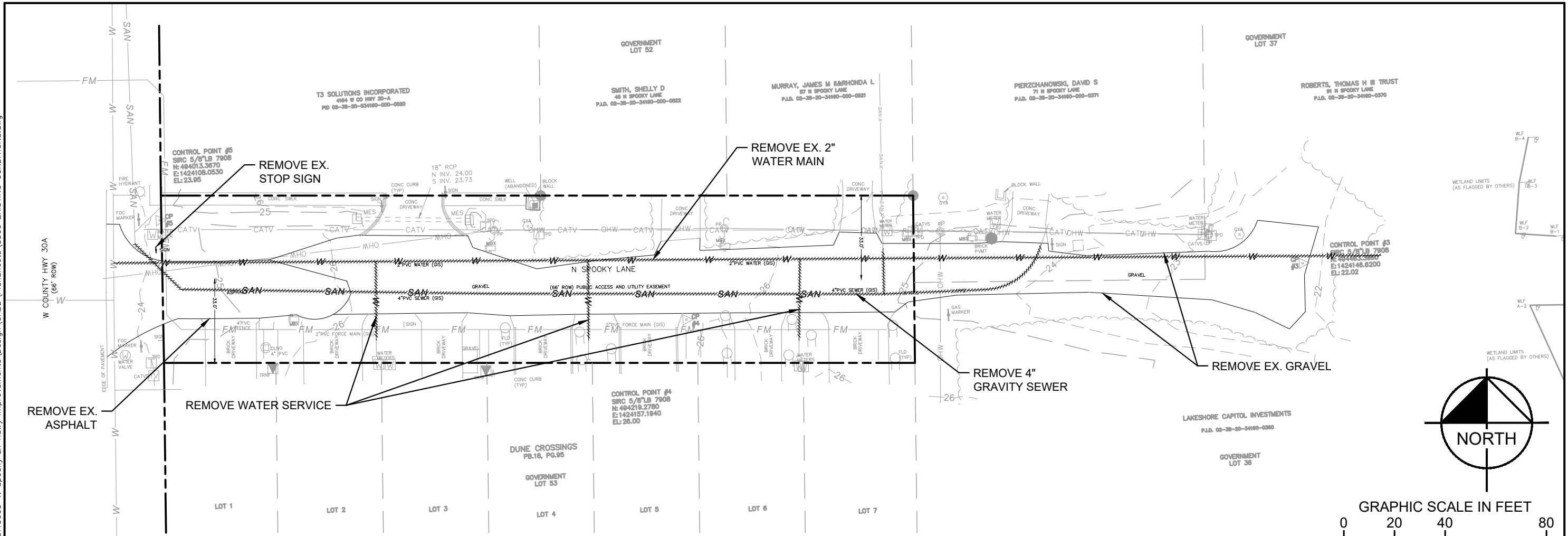
| | |
|-------------------------------|--------|
| WALTON COUNTY PUBLIC WORKS | |
| ROAD NAME | COUNTY |
| NORTH SPOOKY LN. | WALTON |

TYPICAL SECTION

SHEET NO.

C200

Plotted By: King, Michael Sheet Set: 042113003 SPOOKY LN. Layout: C300 May 16, 2022 01:05:53pm K:\TAL_Civil\042113003-N Spooky Ln Rdwy Improvements\Design\CADD\PlanSheets\C300 EXISTING CONDITIONS.dwg



ABBREVIATIONS AND SYMBOLS

- | | | | |
|---|---|------------------------------------|-------------------------------|
| B.O.S. = BEGINNING OF STATIONS | LB# = LAND BUSINESS NUMBER | ⊙ = BOLLARD | ⊕ = STORM DRAIN MANHOLE (MHD) |
| BGV = BELOW GROUND VAULT | LS# = SURVEYOR REGISTRATION NUMBER | ⊞ = CABLE TV SERVICE (CATVS) | ⊞ = TELEPHONE PEDESTAL (TPD) |
| BTM = BOTTOM | M.E.S. = MITERED END SECTION | ⊟ = COMMUNICATION MANHOLE | ⊞ = TRANSFORMER (TRNF) |
| C = CENTERLINE | N.A.V.D.88 = NORTH AMERICAN VERTICAL DATUM OF 1988 | ⊠ = ELECTRIC MANHOLE | ⊞ = WATER METER (WM) |
| CH = CHORD | N/F = NOW OR FORMERLY | ⊡ = ELECTRIC OUTLET | ⊞ = WATER VALVE COVER (VCW) |
| CHB = CHORD BEARING | N.G.V.D.29 = NATIONAL GEODETIC VERTICAL DATUM OF 1929 | ⊡ = WETLAND FLAG (WLF) | ⊞ = WIRE PULL BOX (WPB) |
| C&G = CURB AND GUTTER | No. = NUMBER | ⊞ = FLOOD LIGHT (FLD) | |
| CIP = CAST IRON PIPE | OP = ORNAMENTAL PLAT | ⊞ = FIRE HYDRANT | |
| CM = CRAPE MYRTLE | O.R.B. = OFFICIAL RECORD BOOK | ⊞ = GAS VALVE COVER | |
| CONC. = CONCRETE | P.G. = PAGE | ⊞ = GENERATOR | |
| CP = CONTROL POINT | P.B. = PLAT BOOK | ⊞ = GUY POLE (GYP) | |
| CPP = CORRUGATED PLASTIC PIPE | P.C. = POINT OF CURVATURE | ⊞ = GUY WIRE ANCHOR (GYA) | |
| CTP = CORRUGATED THERMOPLASTIC PIPE | P.I. = POINT OF INTERSECTION | ⊞ = HOSE BIB | |
| D = DELTA or CENTRAL ANGLE | P.O.T. = POINT ON TANGENT | ⊞ = IRRIGATION CONTROL VALVE (ICV) | |
| D.B. = DEED BOOK | P.T. = POINT OF TANGENCY | ⊞ = LIGHT POLE (LP) | |
| EL. = ELEVATION | PVC = POLYVINYL TYPE PIPE | ⊞ = MANHOLE | |
| ELLIP. = ELLIPTICAL | R = RADIUS | ⊞ = MAILBOX (MBX) | |
| E.O.S. = END OF STATIONS | RCP = REINFORCED CONCRETE PIPE | ⊞ = MONITORING WELL | |
| F.D.O.T. = FLORIDA DEPARTMENT OF TRANSPORTATION | RP = RESERVED PARKING | ⊞ = POWER POLE (PP) | |
| FCM = FOUND CONCRETE MONUMENT | ROW = RIGHT-OF-WAY | ⊞ = SANITARY SEWER MANHOLE (MHS) | |
| FIP = FOUND IRON PIPE | S.D.I. = STORM DRAIN INLET | ⊞ = SIGNAL CONTROLLER | |
| FIPP = FOUND IRON PINCHED PIPE | SIRC = SET IRON ROD AND CAP LB #3293 | ⊞ = SIGNAL SPAN POLE | |
| FIR = FOUND IRON ROD | STA. = STATION ON BASELINE OF SURVEY | ⊞ = SINGLE SUPPORT SIGN | |
| FIRC = FOUND IRON ROD AND CAP | TOW = TOP OF WALL | ⊞ = SPOT ELEVATION | |
| FND = FOUND NAIL AND DISK | VCP = VITREOUS CLAY PIPE | ⊞ = STAND PIPE | |
| FOCM = FIBER OPTIC MARKER | W.E. = WATER ELEVATION | ⊞ = STORM DRAIN INLET | |
| FRP = FIBER REINFORCED PLASTIC PIPE | ⊞ = BACKFLOW PREVENTER (BFP) | | |
| ICV = IRRIGATION CONTROL VALVE | ⊞ = SURVEY CONTROL POINT - SET 5/8\"/> | | |

| REVISIONS | |
|-----------|-------------|
| DATE | DESCRIPTION |
| | |



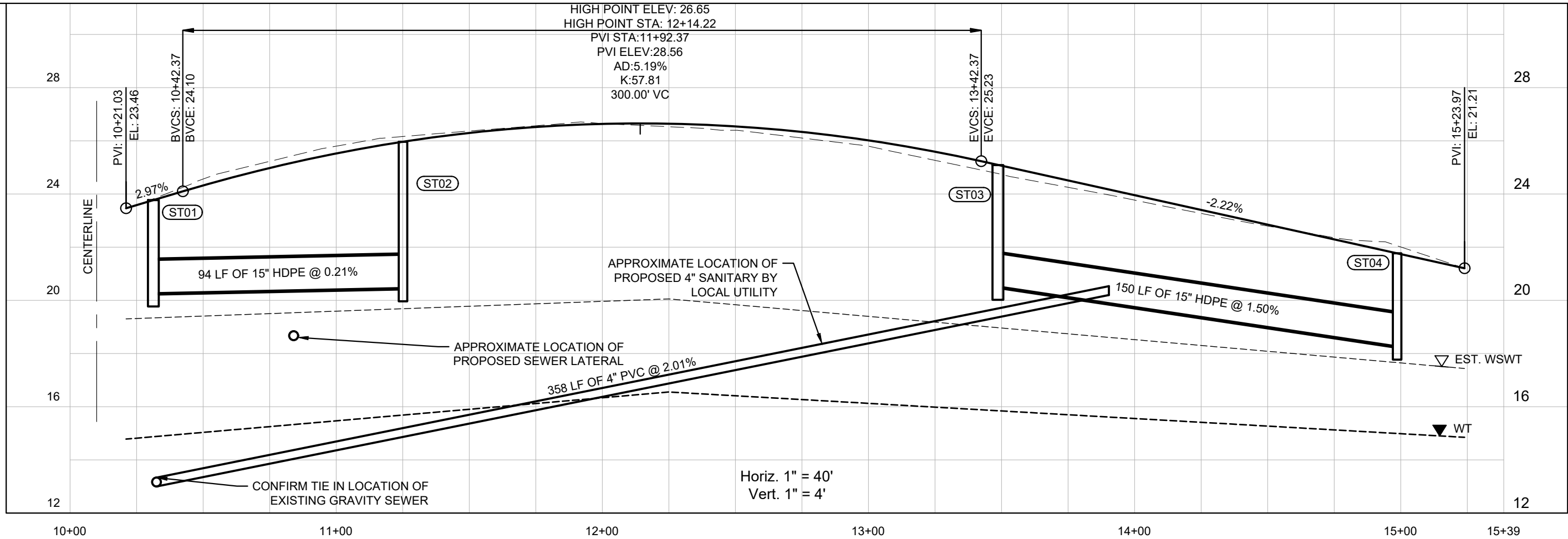
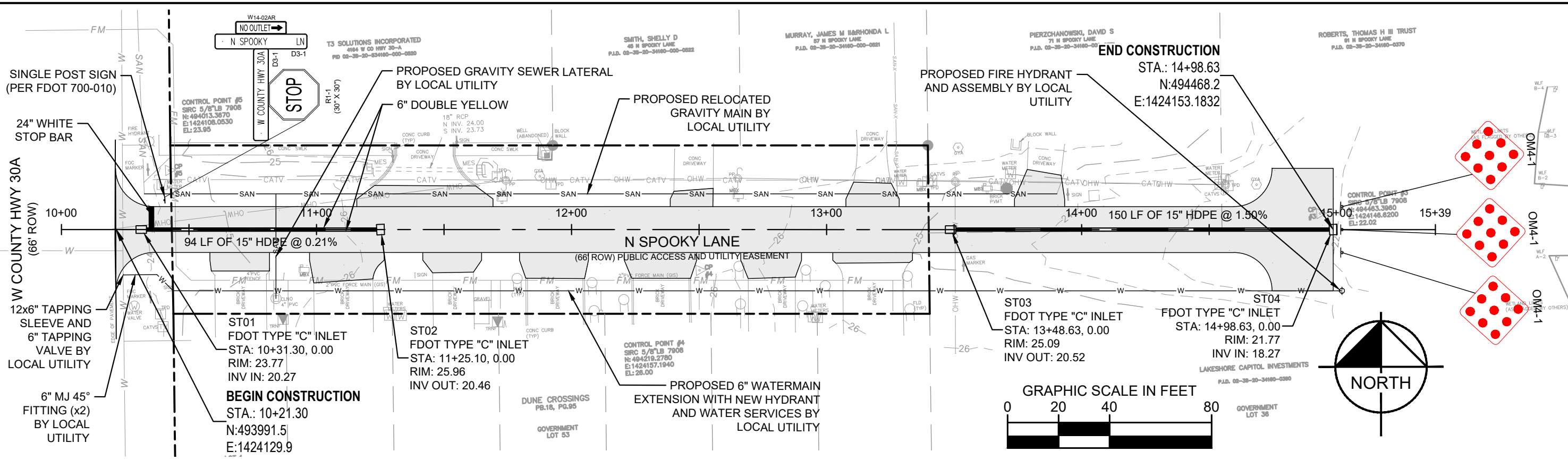
KIMLEY-HORN AND ASSOCIATES, INC.
 Certificate Of Authorization No. 696
 CHRISTOPHER D. HARTMAN, P.E.
 P.E. LICENSE No. 92366
 2619 CENTENNIAL BOULEVARD, SUITE 200
 TALLAHASSEE, FLORIDA 32308

| | |
|-------------------------------|--------|
| WALTON COUNTY PUBLIC WORKS | |
| ROAD NAME | COUNTY |
| NORTH SPOOKY LN. | WALTON |

EXISTING CONDITIONS

SHEET NO.
C300

Plotted By: King, Michael Sheet Set: 042113003 SPOOKY LN. Layout: C400 May 16, 2022 01:06:05pm K:\TAL_Civil\042113003-N Spooky Ln Rdwy Improvements\Design\CADD\PlanSheets\C400 PLAN & PROFILE.dwg



| REVISIONS | |
|-----------|-------------|
| DATE | DESCRIPTION |
| | |



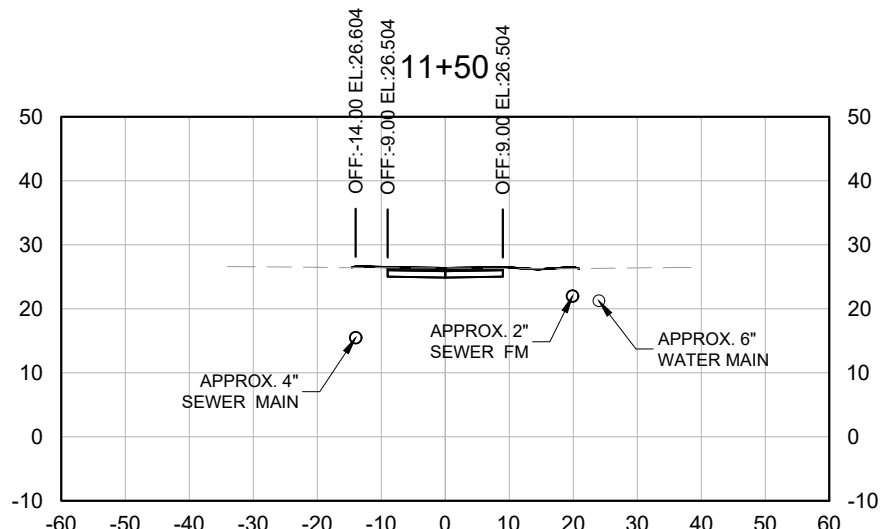
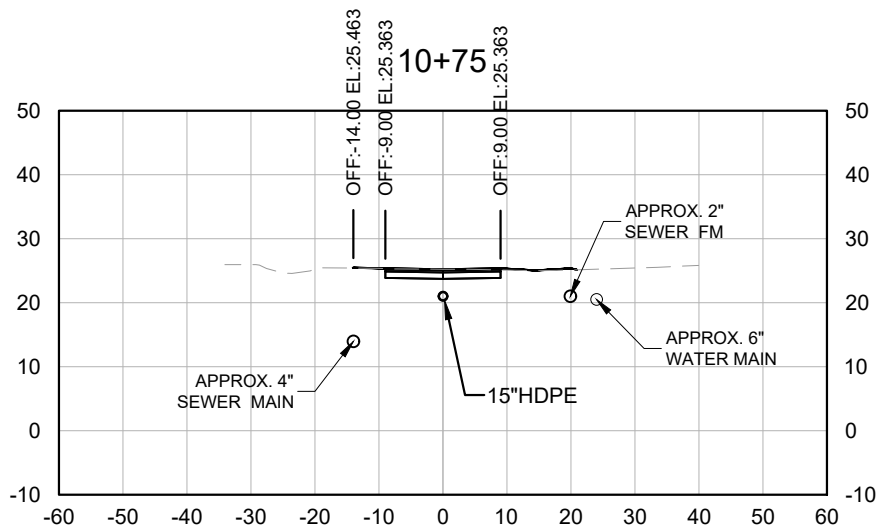
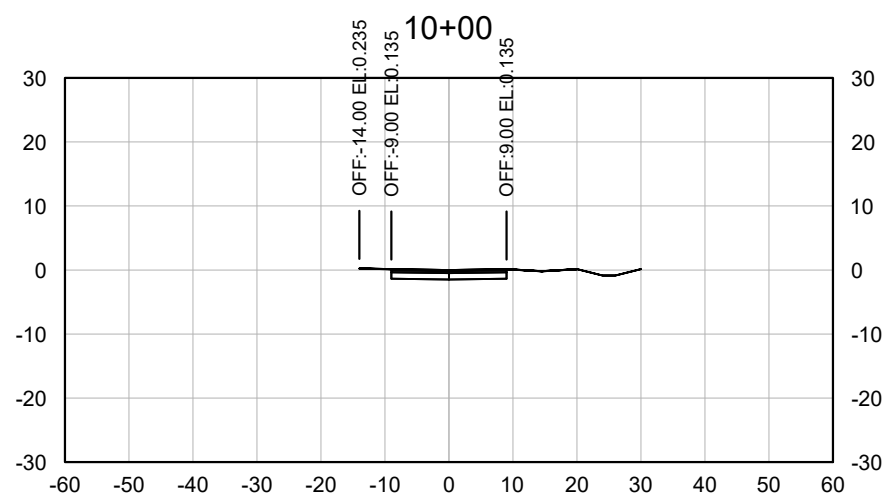
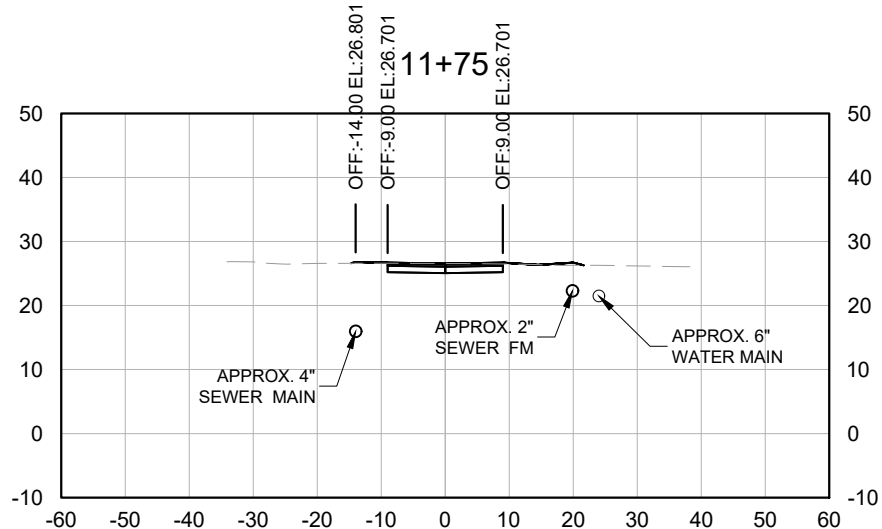
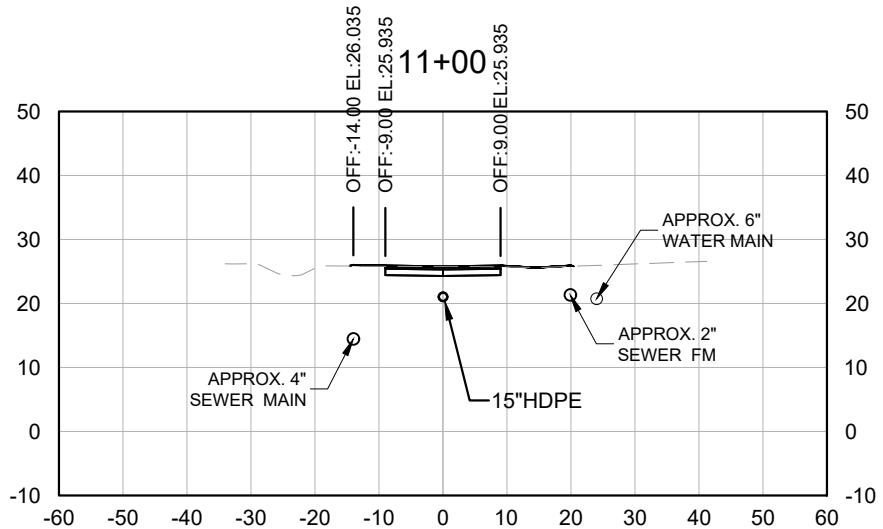
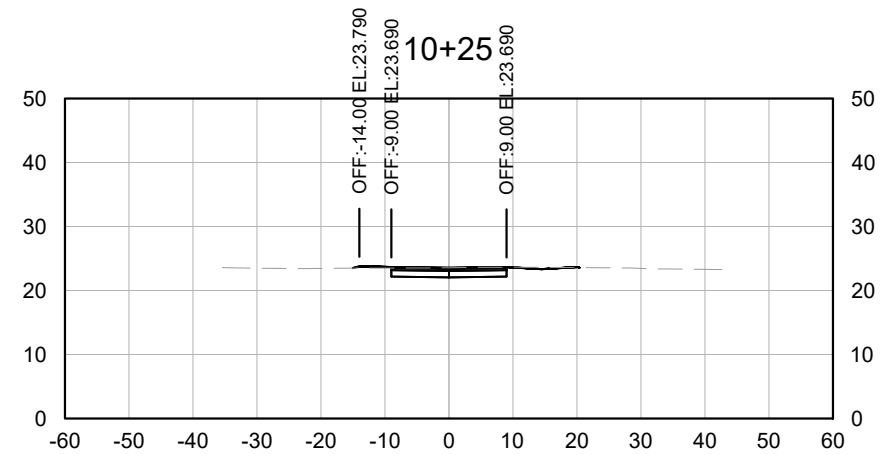
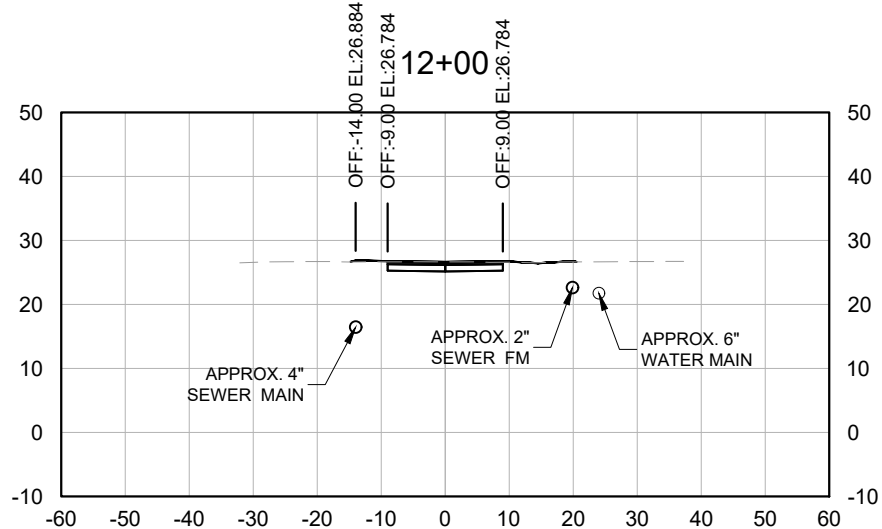
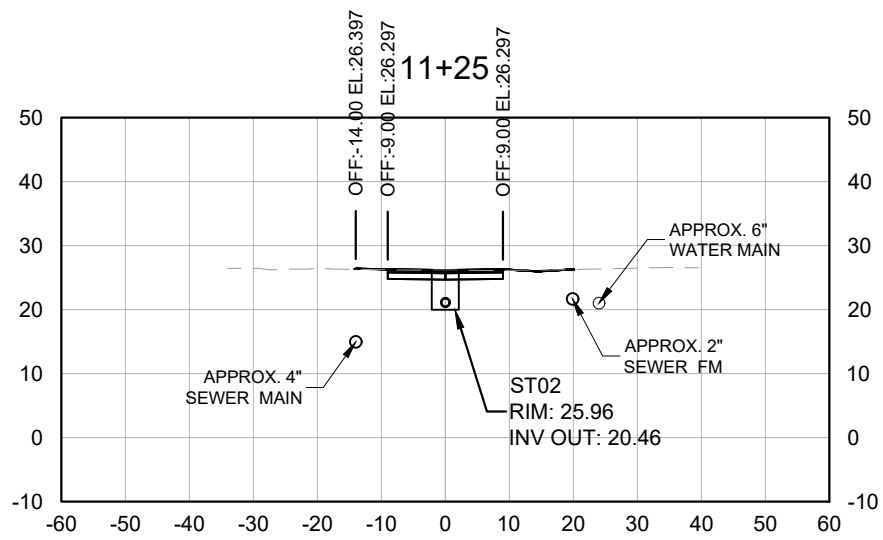
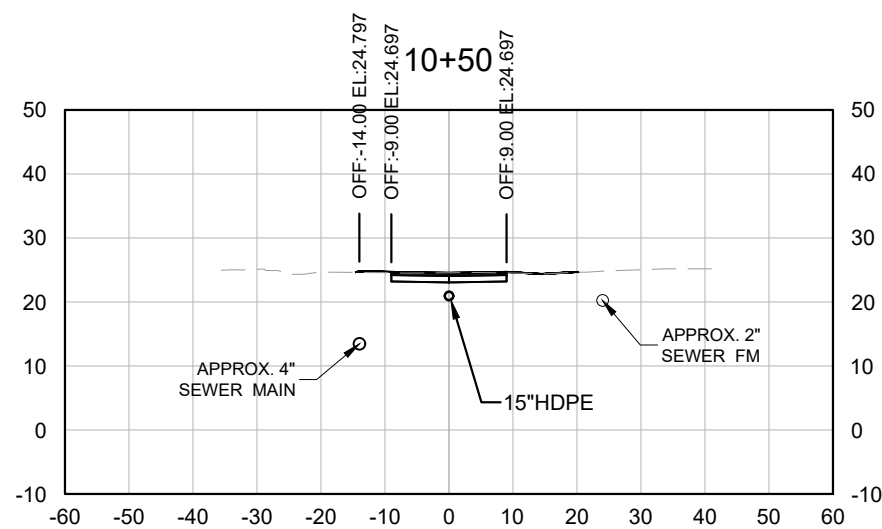
KIMLEY-HORN AND ASSOCIATES, INC.
Certificate Of Authorization No. 696
CHRISTOPHER D. HARTMAN, P.E.
P.E. LICENSE No. 92366
2619 CENTENNIAL BOULEVARD, SUITE 200
TALLAHASSEE, FLORIDA 32308

| | |
|-------------------------------|--------|
| WALTON COUNTY PUBLIC WORKS | |
| ROAD NAME | COUNTY |
| NORTH SPOOKY LN. | WALTON |

PLAN & PROFILE

SHEET NO.
C400

Plotted By: King, Michael Sheet Set: 042113003 SPOOKY LN. Layout: C500 May 16, 2022 01:06:16pm K:\TAL_Civil\042113003-N Spooky Ln Rawy Improvements\CADD\PlanSheets\C500 ROADWAY CROSS SECTIONS.dwg



| REVISIONS | |
|-----------|-------------|
| DATE | DESCRIPTION |
| | |



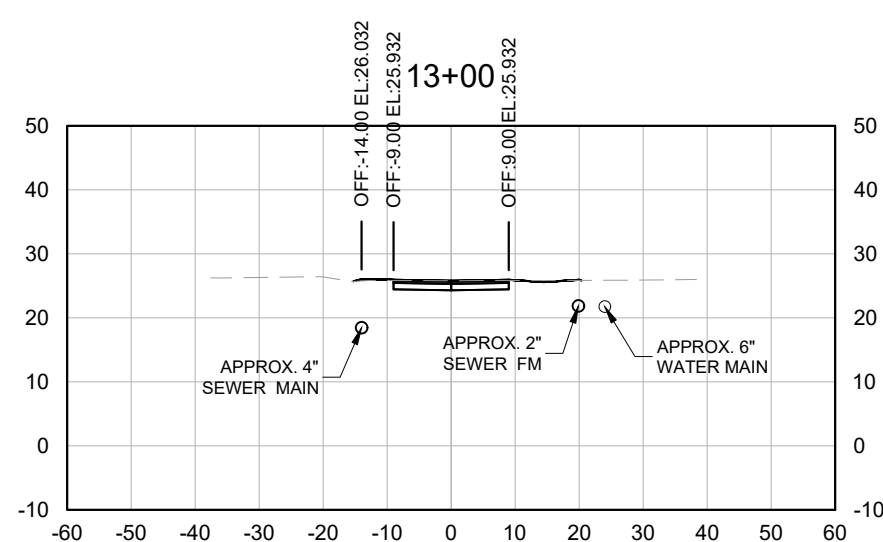
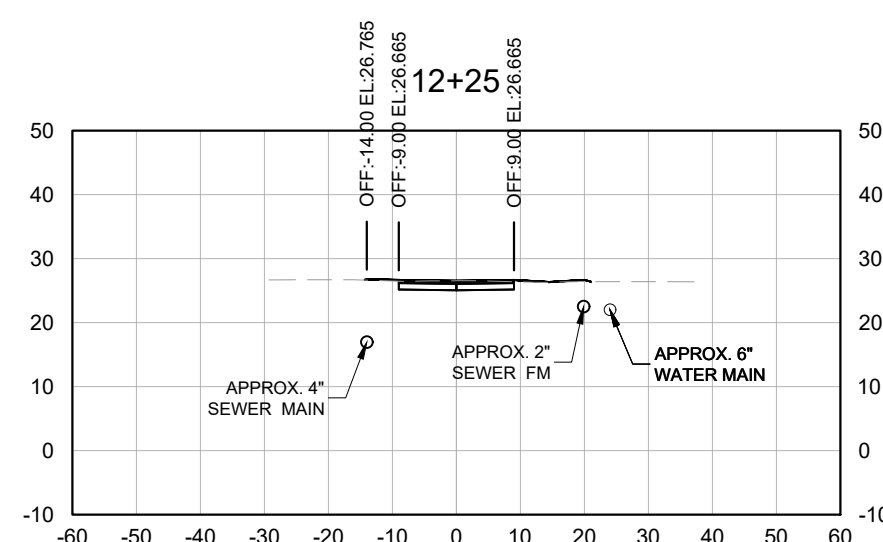
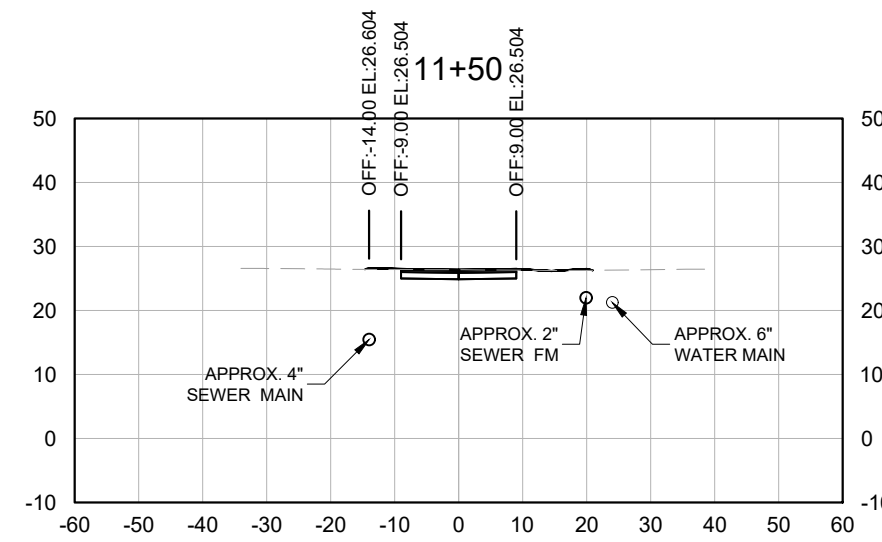
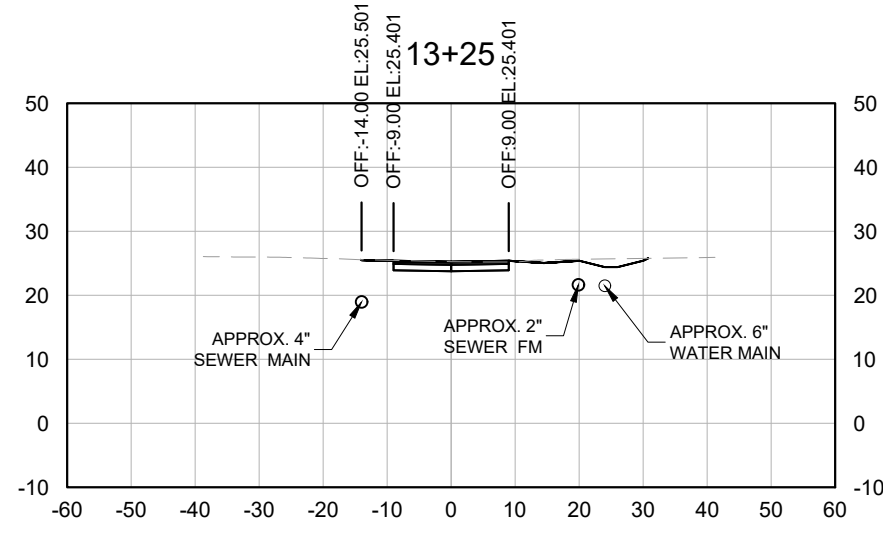
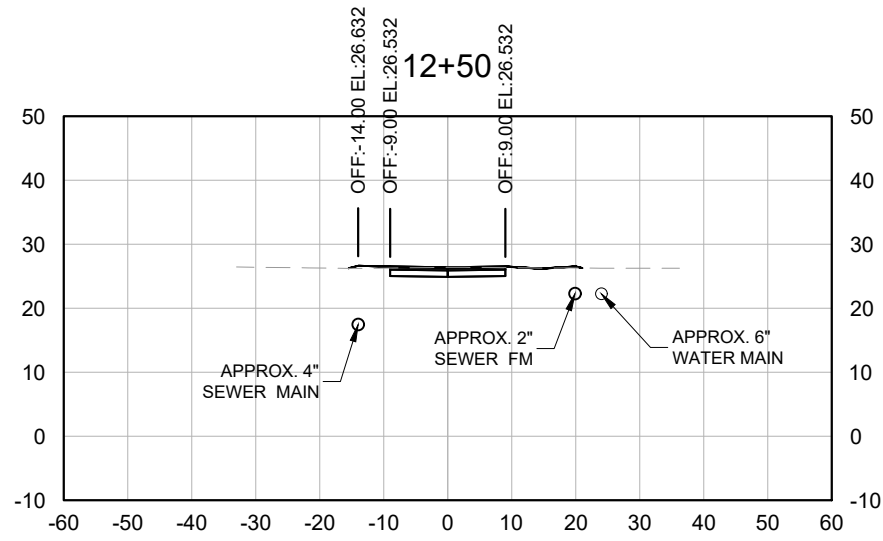
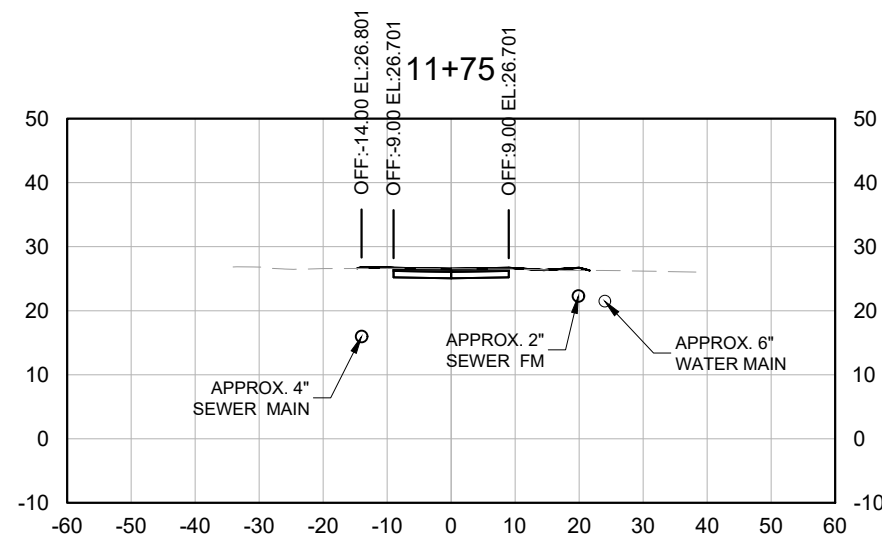
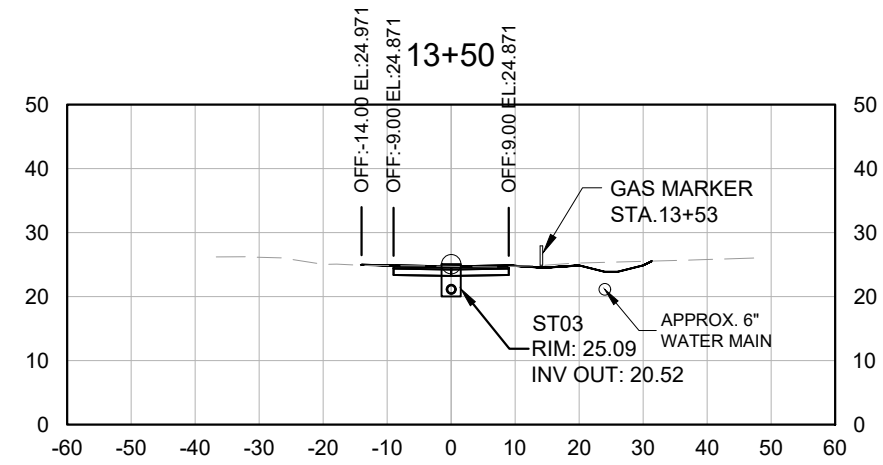
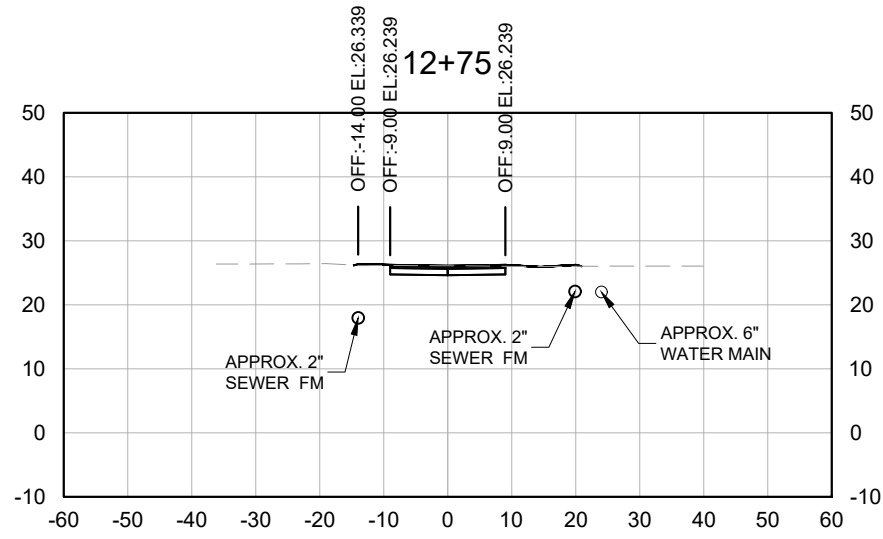
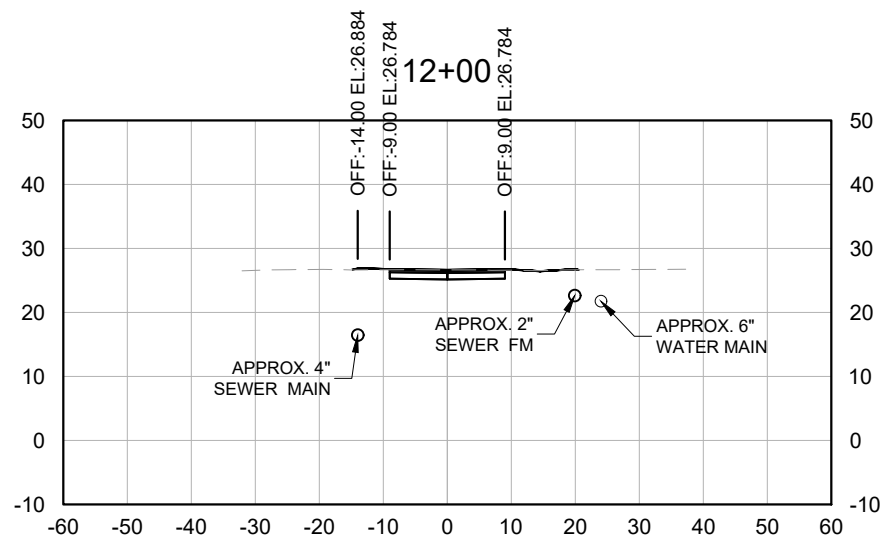
KIMLEY-HORN AND ASSOCIATES, INC.
 Certificate Of Authorization No. 696
 CHRISTOPHER D. HARTMAN, P.E.
 P.E. LICENSE No. 92366
 2619 CENTENNIAL BOULEVARD, SUITE 200
 TALLAHASSEE, FLORIDA 32308

| | |
|-------------------------------|--------|
| WALTON COUNTY PUBLIC WORKS | |
| ROAD NAME | COUNTY |
| NORTH SPOOKY LN. | WALTON |

ROADWAY CROSS SECTIONS

SHEET NO.
C500

Plotted By: King, Michael Sheet Set: 042113003 SPOOKY LN. Layout: C501 May 16, 2022 01:06:18pm K:\TAL_Civil\042113003-N Spooky Ln Rwy Improvements\Design\CADD\PlanSheets\C500 ROADWAY CROSS SECTIONS.dwg



| REVISIONS | |
|-----------|-------------|
| DATE | DESCRIPTION |
| | |



KIMLEY-HORN AND ASSOCIATES, INC.
 Certificate Of Authorization No. 696
 CHRISTOPHER D. HARTMAN, P.E.
 P.E. LICENSE No. 92366
 2619 CENTENNIAL BOULEVARD, SUITE 200
 TALLAHASSEE, FLORIDA 32308

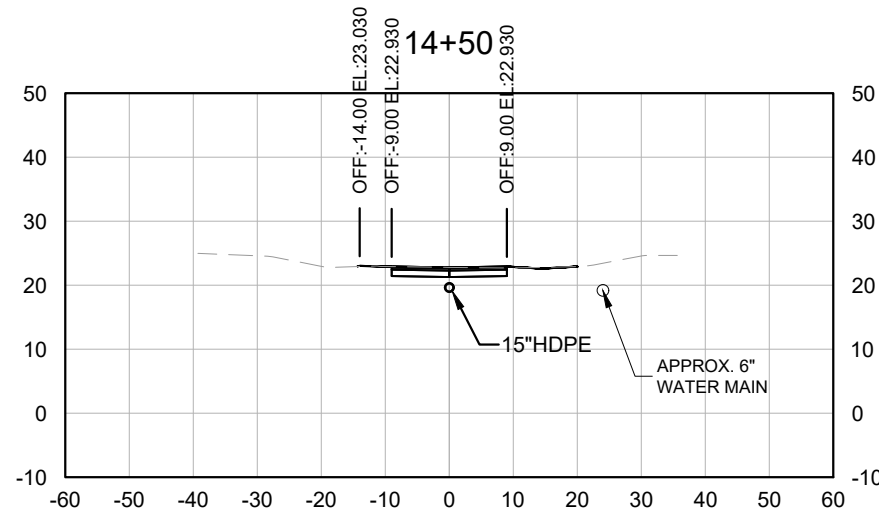
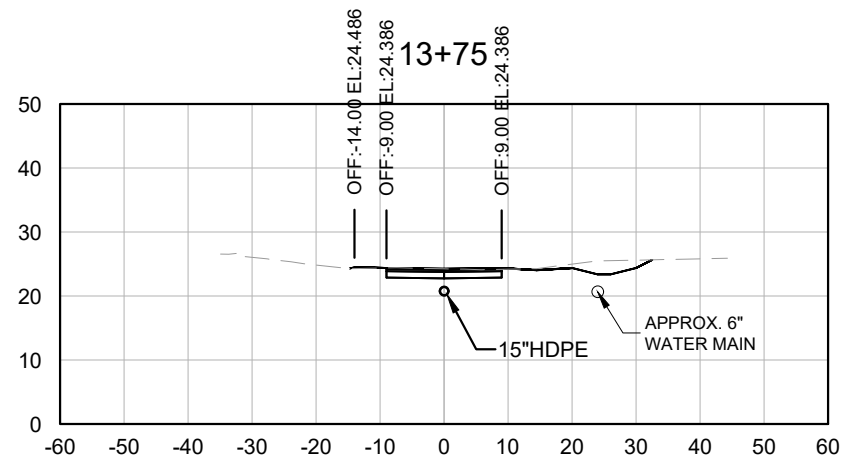
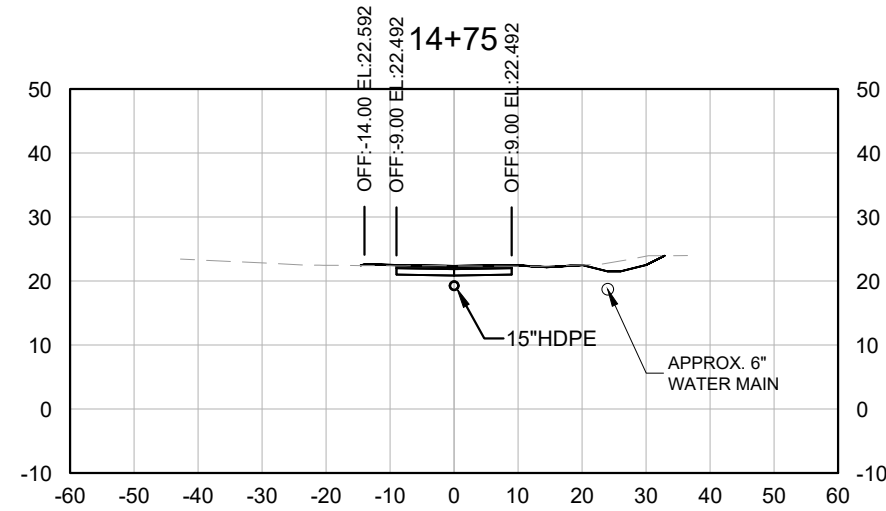
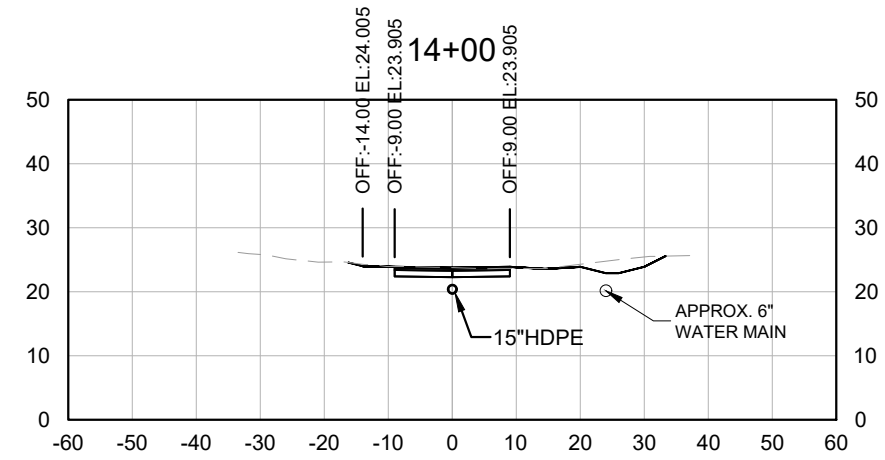
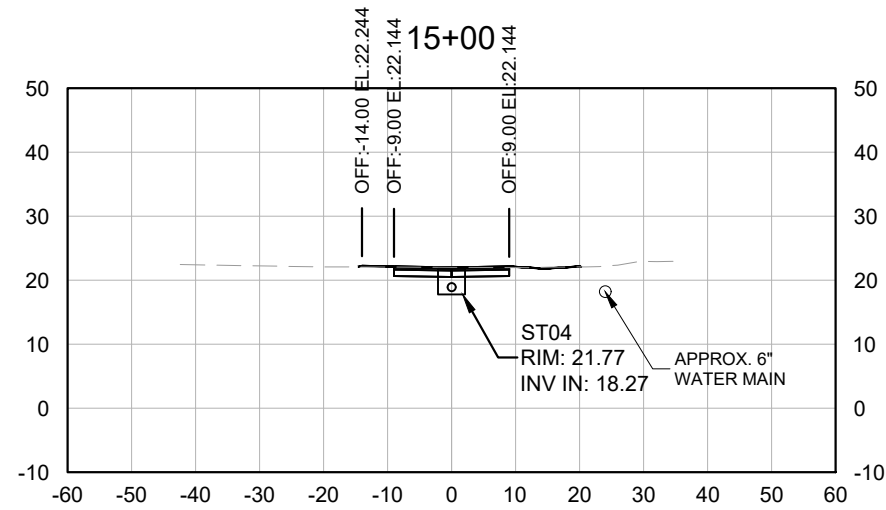
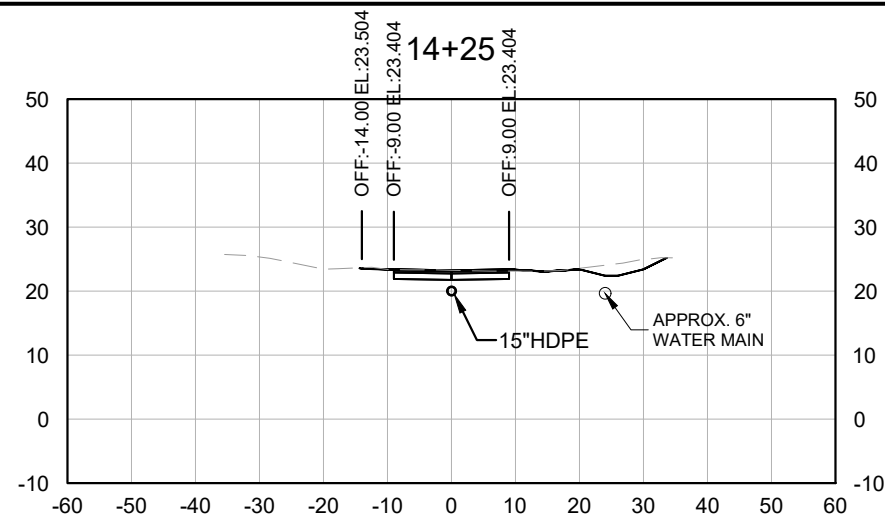
WALTON COUNTY
 PUBLIC WORKS

| ROAD NAME | COUNTY |
|------------------|--------|
| NORTH SPOOKY LN. | WALTON |

ROADWAY CROSS SECTIONS

SHEET NO.
C501

Plotted By: King, Michael Sheet Set: 042113003 SPOOKY LN. Layout: C502 ROADWAY CROSS SECTIONS May 16, 2022 01:06:21pm K:\TAL_Civil\042113003-N Spooky Ln Rdwy Improvements\Design\CADD\PlanSheets\C500 ROADWAY CROSS SECTION:



| REVISIONS | |
|-----------|-------------|
| DATE | DESCRIPTION |
| | |



KIMLEY-HORN AND ASSOCIATES, INC.
 Certificate Of Authorization No. 696
 CHRISTOPHER D. HARTMAN, P.E.
 P.E. LICENSE No. 92366
 2619 CENTENNIAL BOULEVARD, SUITE 200
 TALLAHASSEE, FLORIDA 32308

WALTON COUNTY
 PUBLIC WORKS

| ROAD NAME | COUNTY |
|------------------|--------|
| NORTH SPOOKY LN. | WALTON |

ROADWAY CROSS SECTIONS

SHEET NO.
C502