


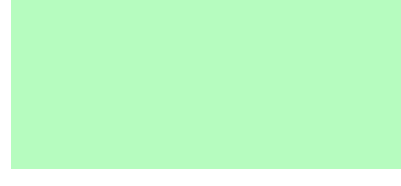


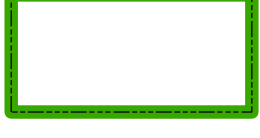



Walton County Board of County Commissioner Districts

District

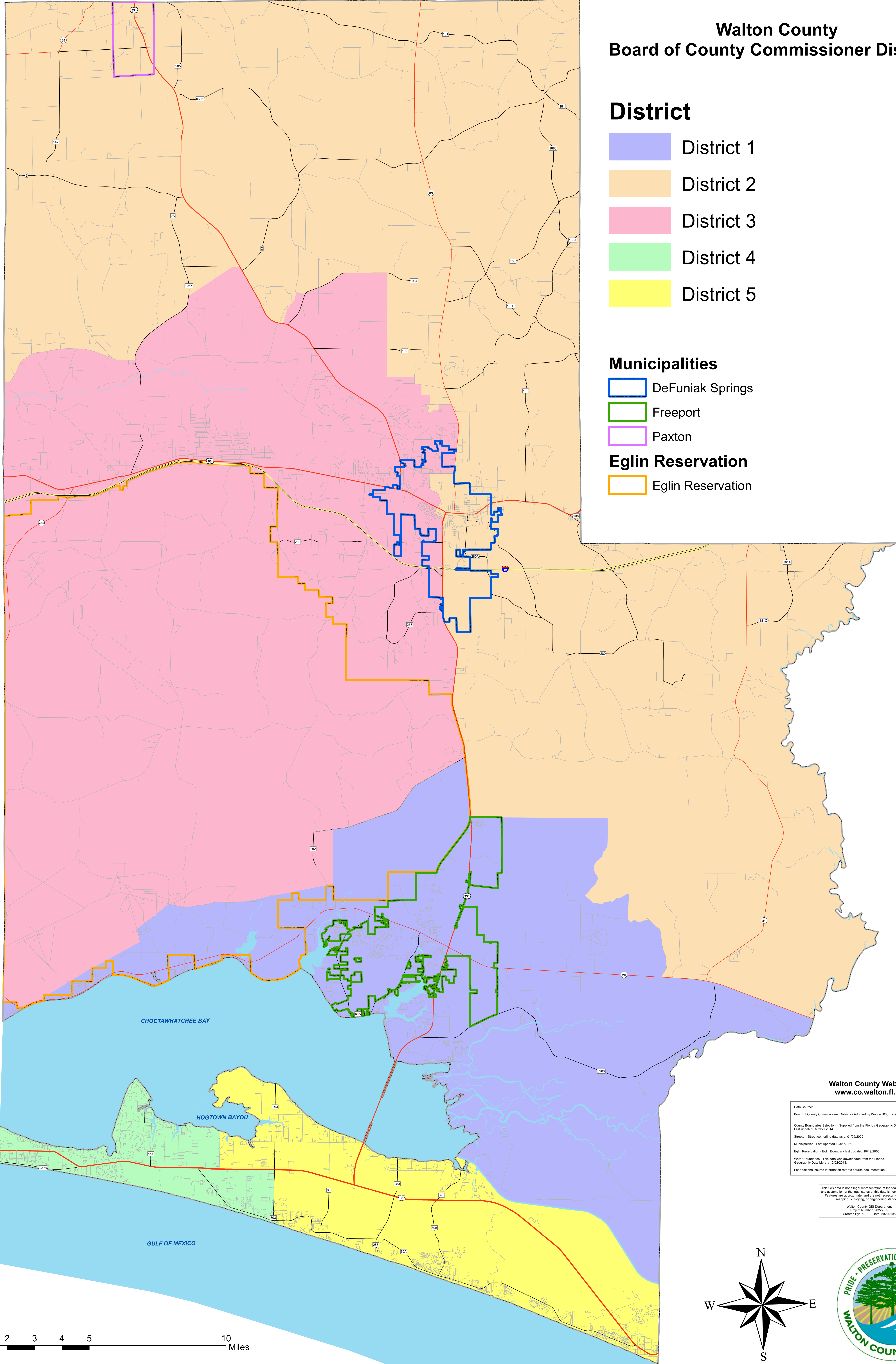
-  District 1
-  District 2
-  District 3
-  District 4
-  District 5

Municipalities

-  DeFuniak Springs
-  Freeport
-  Paxton

Eglin Reservation

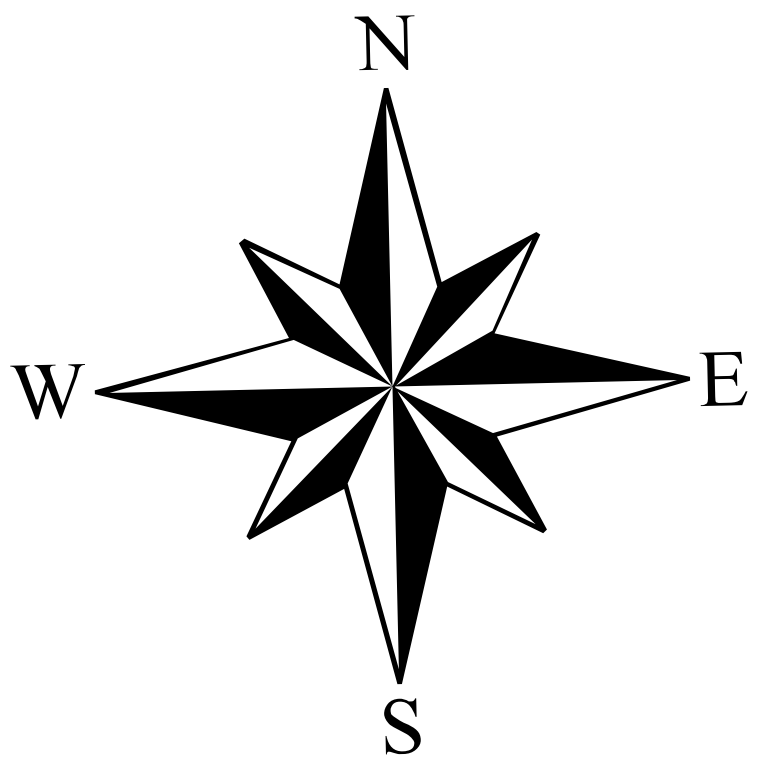
-  Eglin Reservation



Walton County Website
www.co.walton.fl.us

Data Source:
Board of County Commissioner Districts - Adopted by Walton BCC by resolution 2021-154 on 12/29/2021.
County Boundaries Selection - Supplied from the Florida Geographic Data Library.
Last updated October 2014.
Streets - Street centerline data as of 01/09/2022.
Municipalities - Last updated 12/01/2021.
Eglin Reservation - Eglin Boundary last updated 10/19/2006.
Water Boundaries - This data was downloaded from the Florida Geographic Data Library 12/02/2018.
For additional source information refer to source documentation.

This GIS data is not a legal representation of the features depicted; any assumption of the legal status of this data is hereby disclaimed. Features are approximate, and are not necessarily accurate to mapping, surveying, or engineering standards.
Walton County GIS Department
Project Number: 2022-008
Created by: K.L.L. Date: 2022/10/15



0 1 2 3 4 5 10 Miles